



# GAT MONTHLY MEMBERSHIP PROGRESS REPORT

Results as of: 6/30/2023

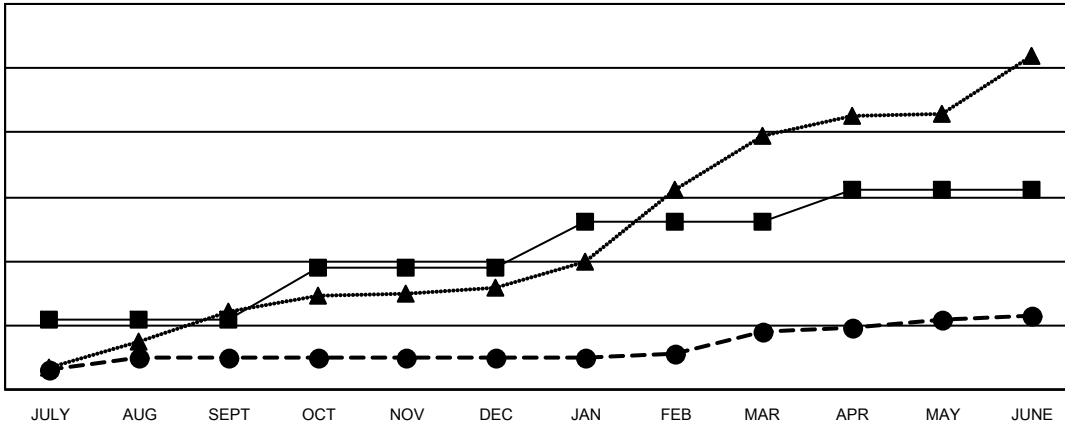
Multiple District 3233

LOCATION: INDIA

Clubs			
RESULTS FOR 2022-2023			
QUARTER	NEW CLUB GOAL	NEW CLUBS	DROPPED CLUBS
JULY/AUG/SEPT	22	10	12
OCT/NOV/DEC	16	0	63
JAN/FEB/MAR	14	8	11
APR/MAY/JUNE	10	5	10

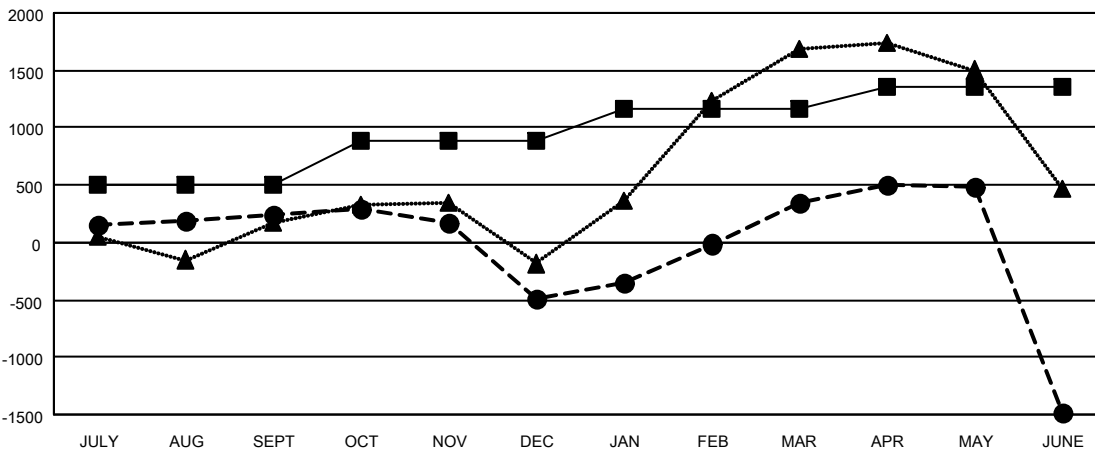
Members			
RESULTS FOR 2022-2023			
QUARTER	MEMBER GROWTH NET GOAL	MEMBER GROWTH ACTUAL	DROPPED MEMBERS ACTUAL (including transfers)
JULY/AUG/SEPT	495	989	638
OCT/NOV/DEC	395	416	1,094
JAN/FEB/MAR	280	1,212	203
APR/MAY/JUNE	180	1,004	2,616

GOALS AND ACTUAL NEW CLUBS CUMULATIVE



- - CURRENT YEAR GOALS FOR NEW CLUBS
- - CURRENT YEAR ACTUAL NEW CLUBS
- ▲ - LAST YEAR ACTUAL NEW CLUBS

GOALS AND ACTUAL MEMBERS CUMULATIVE



- - MEMBER GROWTH NET GOAL
- - MEMBER GROWTH ACTUAL
- ▲ - LAST YEAR MEMBERSHIP ACTUAL

<b>DROPPED CLUBS: 96</b>	542 CLUBS OF 874 ADDED 1 OR MORE NEW MEMBERS	<b>GENDER DISTRIBUTION</b>
<b>DROPPED MEMBERS</b>	<a href="#">CLICK HERE FOR CUMULATIVE MEMBERSHIP DATA</a>	MALE 13,502 (68.36%)
DECEASED 59		FEMALE 6,237 (31.58%)
CLUB CANCELLED 768		NON BINARY 1 (0.01%)
OTHER 3,724		PREFER NOT TO ANSWER 12 (0.06%)
<b>TOTAL 4,551</b>		<b>TOTAL FAMILY UNIT MEMBERS 8,921</b>
		<b>FAMILY MEMBERS PAYING HALF DUES 5,254</b>